



THE COTSWOLD LETTING AGENCY

BETTER BY FAR



Directions

Viewings

Viewings by arrangement only. Call 01993 684572 to make an appointment.

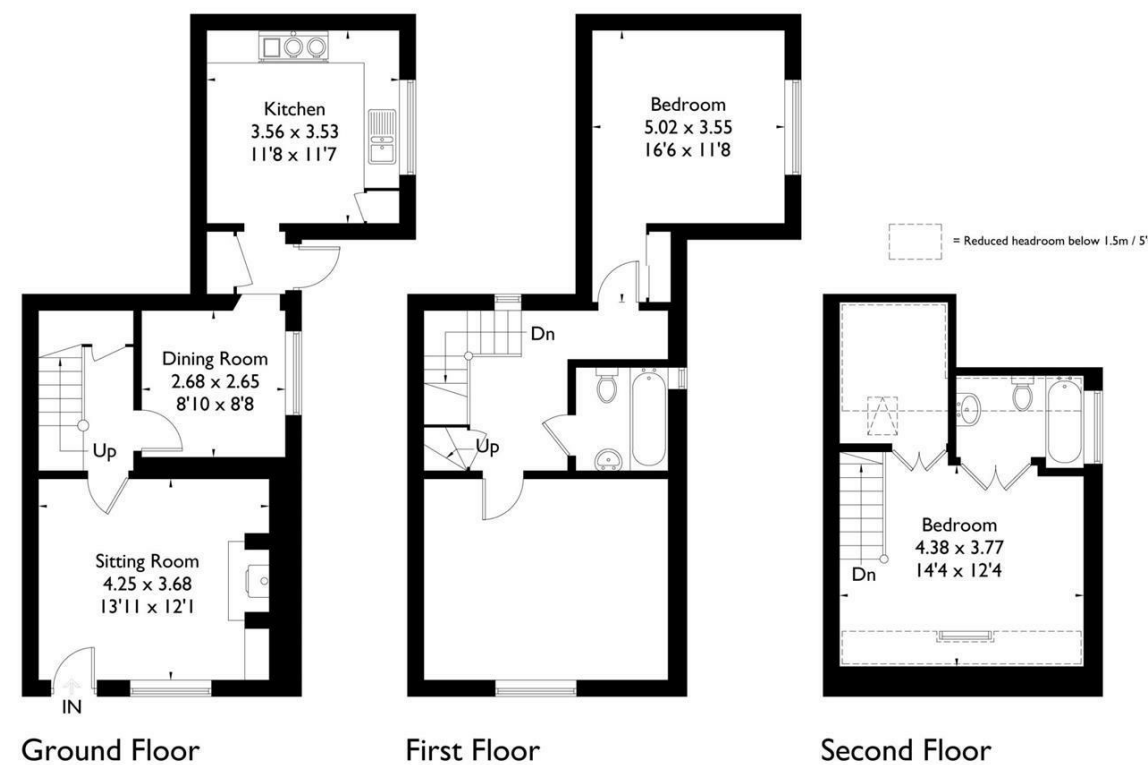
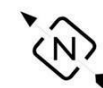
EPC Rating

E

Energy Efficiency Rating		Current	Potential
Very energy efficient - lower running costs			
(92 plus) A			95
(81-91) B			
(69-80) C			
(55-68) D			
(39-54) E		50	
(21-38) F			
(1-20) G			
Not energy efficient - higher running costs			
England & Wales		EU Directive 2002/91/EC	

Fairfield Cottage, Church Road, Quenington, Cirencester, GL7 5BL

Approximate Gross Internal Area = 117.2 sq m / 1262 sq ft



FLOORPLANZ © 2018 0203 9056099 Ref: 209779

This plan is for layout guidance only. Drawn in accordance with RICS guidelines. Not drawn to scale unless stated. Windows & door openings are approximate. Whilst every care is taken in the preparation of this plan, please check all dimensions, shapes & compass bearings before making any decisions reliant upon them.



Fairfield Cottage Church Road, Quenington, GL7 5BL

£2,150

- Lovingly refurbished
- Perfectly situated to explore the Cotswolds
- Walks from the door
- Ideal for up to 4 guests
- Close to a traditional Cotswold pub
- Driveway parking

Fairfield Cottage Church Road, Quenington GL7 5BL

Fairfield is a little gem of a cottage in the lovely village of Quenington, sleeping 4 and beautifully situated in the heart of the Coln Valley. It is generously equipped and immaculately furnished for a comfortable stay, where you can enjoy views of the rolling hills and wildflower meadows that this cottage has on its doorstep. It is just perfect for a small family or couple who are looking to enjoy the peaceful countryside.



Council Tax Band:

Property Information

Fairfield Cottage is a pretty Cotswold holiday home, located in the beautiful village of Quenington. The cottage has been lovingly refurbished by its owners to offer luxurious accommodation for up to 4 guests – ideal for a small family. Perfectly situated to explore the Cotswolds, the property is close to Bibury, Cirencester, and Burford and is also within easy reach of Bourton on the Water, Oxford, and Cheltenham. Close to the property is a traditional Cotswold pub, perfect to relax in and to enjoy great food and beautiful surroundings, with plentiful walks from the front door and beyond.

Bills charged on a per usage basis.

